



Fakulta rybnářství  
a ochrany vod  
Faculty of Fisheries  
and Protection  
of Waters

Jihočeská univerzita  
v Českých Budějovicích  
University of South Bohemia  
in České Budějovice

# WELCOME GUIDE 2024/2025



## Table of contents:

ARRIVAL .....	3
FROM THE RAILWAY STATION TO THE DORMITORY .....	5
PUBLIC TRANSPORT IN ČESKÉ BUDĚJOVICE .....	7
TRAVELLING TO THE TOWN OF VODŇANY .....	7
CURRENCY .....	8
<i>How to exchange money?</i> .....	8
WORKING HOURS .....	9
PUBLIC HOLIDAYS .....	9
<i>Significant days</i> .....	9
PHONE SERVICES IN THE CZECH REPUBLIC .....	10
INSURANCE .....	10
MEDICAL AID .....	11
ERASMUS STUDENT NETWORK USB BUDWEIS (ESN USB) .....	12
<i>Mentor / Buddy system</i> .....	12
USE OF COMPUTERS/INTERNET .....	13
ACCOMMODATION .....	13
USB IDENTIFICATION CARDS.....	14
<i>Standard Card of the University of South Bohemia (for students)</i> .....	14
<i>ISIC – International Student Identification Card</i> .....	14
DINING.....	15
COSTS OF LIVING .....	15
ACADEMIC YEAR 2024/2025 .....	15
GRADING SYSTEM.....	15
<i>Czech grading scale</i> .....	15
STRUCTURE OF HIGHER EDUCATION IN THE CZECH REPUBLIC.....	16
USEFUL AND INTERESTING WEB-PAGES.....	18
FREE TIME .....	18

## CONTACTS:

### Lucie Kačerová

*Faculty Erasmus+ Coordinator*

Address: Study Office

Faculty of Fisheries and Protection of Waters (FFPW)

University of South Bohemia (USB)

Zátiší 728/II, 389 25 Vodňany

Door: 01024 (1<sup>st</sup> floor)

Phone number: +420 734 269 084; +420 387 774 736

E-mail: [lkacerova@frov.jcu.cz](mailto:lkacerova@frov.jcu.cz)

*Responsibilities: Nominating participants and administering their stay, courses and any practical placements attended, signing the Erasmus Confirmation documents before arrival and upon departure.*



### Magdaléna Smržová

*Welcome Officer*

Address: International Office – Rectorate

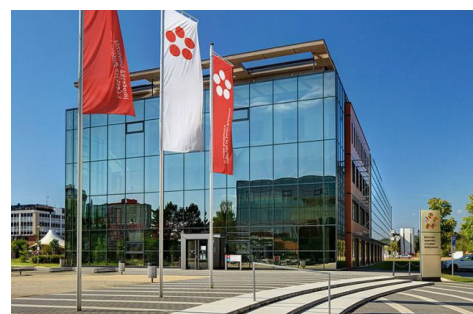
Branišovská 1645/31a, 370 05 České Budějovice

Room: 044 – 4th floor – Main Rectorate Building

E-mail: [smrzovam@jcu.cz](mailto:smrzovam@jcu.cz)

Phone number: +420 389 036 027

*Responsibilities: Orientation Week, Accommodation at dormitories, Visa service if needed.*



### Your Buddy

*...is here to help with formalities and with your set up after your arrival and during your stay. To get your buddy you have to fill in this [on-line form](#)*

## ARRIVAL

### By plane – to [Prague Airport](#)

**TIP:** See the [Honest Guide](#) YouTube channel for great tips and tricks on how to get around Prague safely and cheaply!

#### Bus Lines:

- **119:** Prague Airport – takes you to “Nádraží Veleslavín” (metro Line A) - **15 min**
- **100:** Prague Airport – takes you to “Zličín” (metro Line B) - **18 min**

**Airport Express (AE):** from Prague Airport to **Prague Main Railway Station** (metro Line C and connection to SC, EC, IC and EN trains). The bus line operates daily from 5:30 am till 10:00 pm in an interval of 15-30 minutes. The journey takes 33 minutes. AE tickets may be purchased in the

Visitor Centre at Arrival Hall or directly from the driver. The cost is 100 CZK. **(Please note:** standard Prague Public Transport tickets cannot be used in the AE buses). Your luggage is free of charge.



Follow this sign:



## Tickets:

### [Where to buy tickets](#)

**Short-term Prague transport tickets (30 minutes, 90 minutes, 1 day, 3 days) valid on metro, tram, bus, ferry, and train lines within the area of Prague can be purchased in the following ways:**

- At visitor information centres and selling points in most of the metro stations
- In yellow ticket vending machines located in metro stations and at some surface transit stops
- In newspaper shops across Prague
- In the PID Lítačka app (paid by credit/debit card, Masterpass or Apple Pay, ticket needs to be activated before your travel)
- On every tram (only by contactless credit/debit card)

### How to use the tickets

Are you travelling for the first time? Don't forget to validate your ticket.

The purchased ticket must be validated in a yellow validating machine ("validator"), otherwise the ticket is invalid and the passenger is treated as ticketless.

Validators are placed at entrances to metro or funicular stations, at train platforms and on every tram and bus.

Since the moment of validation, the ticket is valid for its designated time. **Each ticket must be validated only once; when changing between lines or individual means of transport, do not validate the ticket again. Avoid a fine!**



### Bus stop:

- Terminal 1
- Terminal 2 – in front of the Arrival Hall

### Public Transport Ticket sales points

- Public Transport counters in Arrival Halls of Terminals 1 & 2 (from 7 am to 10 pm)
- Ticket vending machines located at bus stops (cash required)
- From a bus driver (cash required)

### [Latest public transportation information](#)

### [Public transportation fares](#)

### [Prague Main Railway Station](#)

At the Railway station, go to the ticket office and buy a single ticket to České Budějovice (CZK 219 - 239). The journey should not take longer than 3 hours. You can search the train timetable to "České Budějovice" [HERE](#).

## Connections and tickets

FROM	Praha hl.n.	▼
↕		
TO	České Budějovice	▼

*Tip: Select the destination point and arrival point as shown above.*

Before you arrive to the Czech Republic, you will be contacted by your Buddy (student of the University of South Bohemia who will help you at the beginning of your stay – see the Erasmus Student Network USB Budweis section). Before your arrival, please do inform your Buddy about the time of your arrival to České Budějovice. **Your Buddy should help you to get to the dormitory after your arrival.**

#### FROM THE RAILWAY STATION TO THE DORMITORY

Travel around České Budějovice by [public transport](#) (website is in Czech only).

#### Tickets:

##### Where to buy tickets?

Short-term tickets can be purchased in the following ways:

- At visitor information centres and sales points
- In yellow ticket vending machines
- In newspaper shops

##### How to use the tickets?



Are you travelling for the first time?

The purchased ticket must be validated in a yellow validating machine (“validator”), otherwise the ticket is invalid and the passenger is treated as ticketless. Validators are placed on every trolleybus and bus. Since the moment of validation, the ticket is valid for its designated time. **Each ticket must be validated only once; when changing between lines or individual means of transport, do not validate the ticket again.**

#### Bus stop



- At each bus stop there is a passenger information post.
- The top section lists the bus/trolley lines servicing the bus stop.
- The LED screen displays a countdown estimated time of arrival, along with the terminal station of the given line.
- Under the LED screen there are timetables for the individual bus/trolley lines.





## Bus/trolley lines timetables

- The top left corner indicates the number of the bus/trolley line.
- The first column lists all the bus stops serviced by the indicated line. The bus stop you are standing at is **highlighted**.

The next three columns show times of arrival for the indicated line:

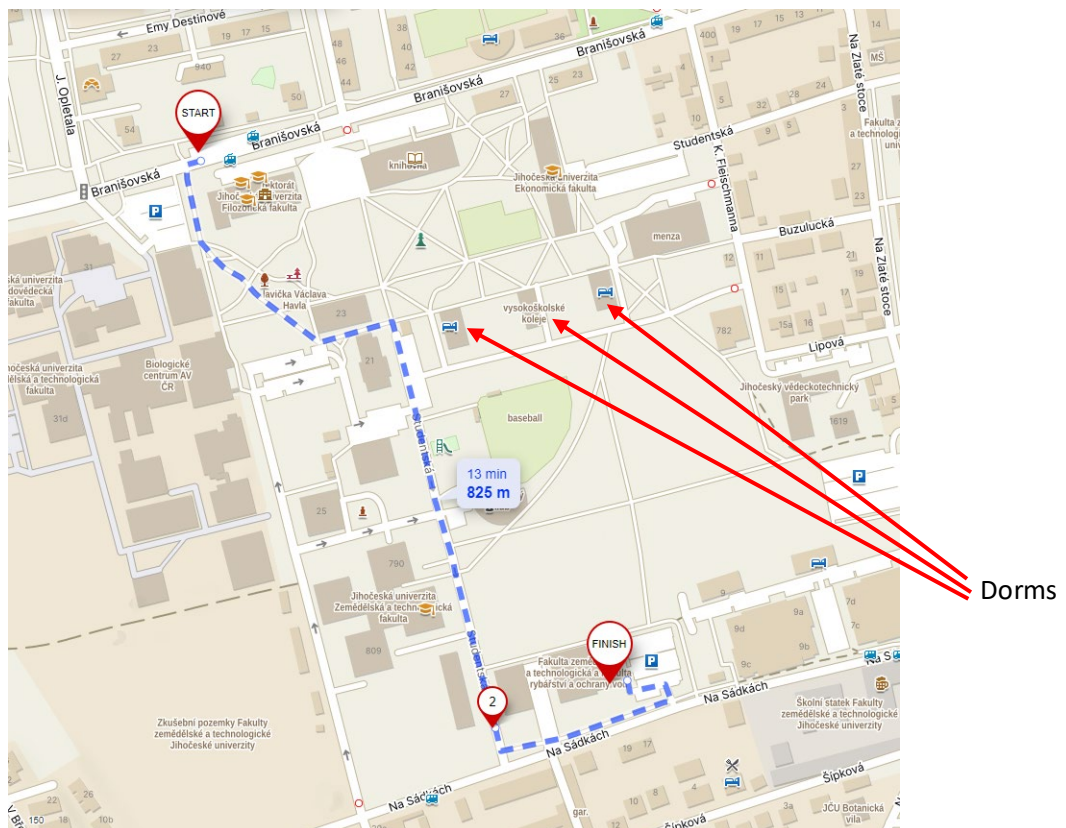
- The second column shows the times of arrival on working days.
- The third column shows the times of arrival on working days during school holidays.
- The fourth column shows the times of arrival on weekends and public holidays.

## Bus/trolley lines going from the train station and bus station to the Faculty

The easiest way to get from the main railway station or the main bus station to the Faculty building in the University Campus is by public transport.

- Go to the **“Nádraží”** bus stop (located by the Mercury Shopping Centre).
- Take the **trolley Line 4** and get off at the **“Jihočeská univerzita”** bus stop (a 15-minute ride).

Now it's only a 10-minute walk to the Faculty of Fisheries and Protection of Waters:



## PUBLIC TRANSPORT IN ČESKÉ BUDĚJOVICE

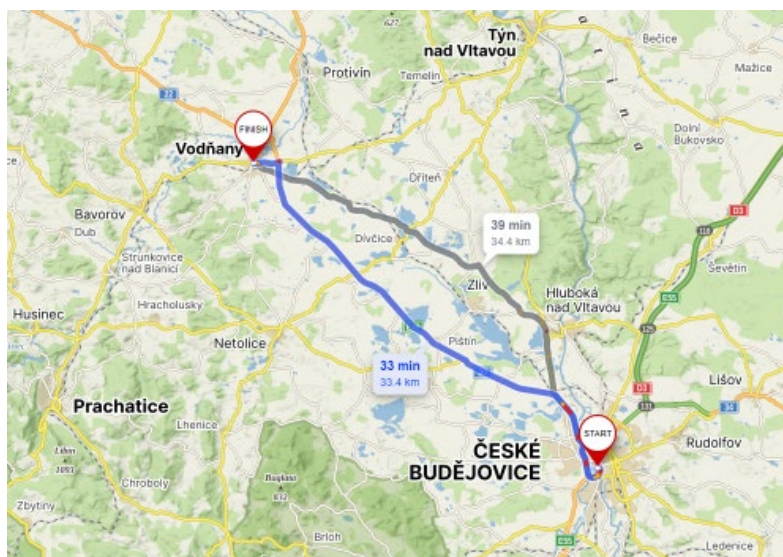
Public Transport in České Budějovice – fares:

- A single-trip ticket costs CZK 20 and it is good for 60 minutes of travel.
- A 1-month transport pass costs CZK 210 (for students under 26) or CZK 420 (for adults); the charge may be higher, depending on the selected fare zones.
- A 3-month transport pass costs CZK 560 (for students under 26) or CZK 1120 (for adults)

You will be shown where the ticket office is when you get to České Budějovice. To get a student transport pass **you need a photo (passport photo size)** and a certificate from the International Relations Office confirming that you are an international student studying at the University of South Bohemia. You will get the certificate after your arrival, during the first meeting at the International Relations Office. Please note: when you purchase a paper transport pass for the first time you will be charged an extra CZK 40 service fee.

## TRAVELLING TO THE TOWN OF VODŇANY

Some of the facilities operated by the Faculty of Fisheries and Protection of Waters are located in the town of Vodňany (approx. 30 km northwest from České Budějovice).

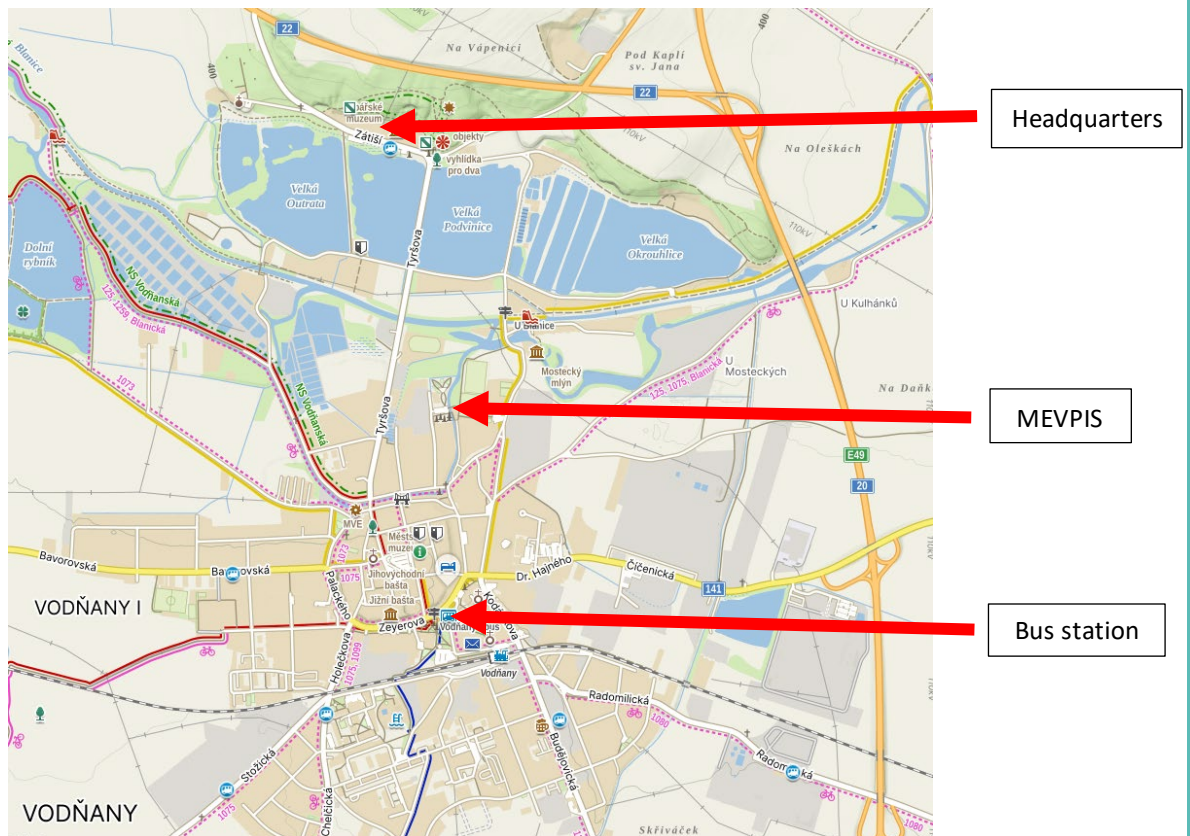


### Travelling from Prague to Vodňany:

- Take the train from Prague to České Budějovice and then transfer to a bus to Vodňany (departing from the “České Budějovice, autobusové nádraží” bus station at the rooftop of the Mercury Shopping Centre, just across the street from the Main Train Station)
- Take the bus from Prague to Strakonice and then transfer to a bus to Vodňany

### Travelling from České Budějovice to Vodňany:

- Take a bus to Vodňany (departing from the “České Budějovice, autobusové nádraží” bus station at the rooftop of the Mercury Shopping Centre)
- Ask if there is someone driving to Vodňany who could take you there (usually people are shuttling back and forth between České Budějovice and Vodňany several times a week).



## CURRENCY

The Czech Republic's official currency is the Czech crown (CZK, *koruna* in Czech).

1 CZK = 100 hellers. Czech banknotes come in 6 denominations: CZK 5000, 2000, 1000, 500, 200 and 100 CZK. The coins also come in 6 denominations: CZK 50, 20, 10, 5, 2, and 1.

The Czech crown is freely convertible on world currency markets; exchange rates are available [HERE](#).



## How to exchange money?

- \* **Banks** charge 2-3% commission for cash exchange; they are generally open Mon-Fri 8 a.m. – 5 p.m. At any other time or on weekends you can use exchange offices in the centre of Prague.
- \* **Exchange offices** usually do not charge any commission. You can exchange your money at [Prague airport](#) or in České Budějovice.



## WORKING HOURS

Shops in Prague are generally open Monday to Friday from 9 a.m. to 6 p.m. or later, and from 9 a.m. till noon on Saturdays. Banks are open from 8 a.m. to 5 or 6 p.m., Monday to Friday. Food stores are open from 8 a.m. and many of them stay open till the evening on Saturdays. There are also some hypermarkets (for example Tesco) that are open nonstop.

Visiting hours in most of Czech monuments are from 9 or 10 a.m. till 5 or 6 p.m. A number of museums, galleries, and castles are **not open on Mondays**, so check ahead. If you visit a [castle](#), bear in mind that the beginning of the last tour is 1 hour or 1,5 hours before the end of the opening hours.

[The National Museum](#) is open daily from 10 a.m. to 6 p. m. [The Jewish Museum in Prague](#) is closed on Saturdays and on Jewish holidays. [The National Gallery](#) is open daily except Mondays, from 10 a.m. to 6 p. m.

## Czech Post

Post offices in the Czech Republic are generally open Mon–Fri from 8 a.m. to 6 p.m., and Saturdays from 8 a.m. to 12 a.m.

Rates for ordinary letters and postcards:



- within the Czech Republic starting from CZK 27
- to European countries starting from CZK 44
- to Non-European countries starting from CZK 50

## PUBLIC HOLIDAYS

### Public holidays in the Czech Republic:

1 January	Restoration of the Independent Czech State Day, New Years's Day
two days before easter	Good Friday
day after Easter	Easter Monday
1 May	May Day (Labour Day)
8 May	Liberation Day
5 July	Saints Cyril and Methodius Day
6 July	Jan Hus Day
28 September	Statehood Day
28 October	Independent Czechoslovak State Day
17 November	Struggle for Freedom and Democracy Day, International Students' Day
24 December	Christmas Eve
25 December	Christmas Day
26 December	Second Day of Christmas

## Significant days

The Czech Republic's Significant Days include 12 March (the day when the Czech Republic joined NATO) and 5 May (Czech people's May uprising at the end of World War II).

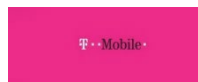
## PHONE SERVICES IN THE CZECH REPUBLIC

There are three mobile operators in the Czech Republic:

- [O<sub>2</sub>](#)



- **T-Mobile**



- [Vodafone](#)



If you intend to buy a SIM card, **your cell phone needs to be unblocked**. Prepaid SIM cards cost between CZK 200 and CZK 2000.

### Important telephone numbers and addresses

155 *Emergency medical services*

158 *Police*

150 *Fire service*

156 *Municipal police*

112 *European emergency phone number*

1230 *Emergency road service*

1180 *Telephone number directory for Prague and the Czech Republic*

1181 *Foreign telephone number directory, information on services and rates for international dialling*

### Country codes

Austria	+43	Norway	+47
France	+33	RSA	+27
Finland	+358	Slovakia	+421
Germany	+49	Spain	+34
Great Britain	+44	Sweden	+46
Greece	+30	Switzerland	+41
Italy	+39	USA	+1
Netherlands	+31	to the Czech Republic	+420

## INSURANCE

### Students from EU countries

Students from EU countries and also from Iceland, Liechtenstein, Norway, and Switzerland are entitled to **free** emergency healthcare.

It is necessary to have a [European Health Insurance Card](#).

***It is highly recommended to take out a supplementary travel health insurance.*** Students must arrange it **before** leaving the country of origin.



### Students from non-EU countries

Students from non-EU countries who are staying in the Czech Republic for **longer than 3 months** have to purchase insurance from an insurance company which is licensed to operate in the territory of the Czech Republic according to a special legal regulation, i.e.:

- National insurance companies and insurance companies from non-EU countries that were granted a license to operate an insurance business by the Czech National Bank;
- Insurance companies from other EU countries whose operations in the Czech Republic are based on the right to set up branch offices or are based on the freedom to provide services temporarily.

It is recommended to consult [the Czech Embassy or consulate](#) and verify whether the insurance meets the requirements for an application for a visa or residence permit for stays longer than 90 days.

Travel medical insurance must cover the cost of emergency medical care, including medical evacuation or, in the event of death, repatriation of remains to the country where the applicant's travel document was issued or to the applicant's country of residence. ***The insurance policy must not exclude coverage for injuries and damage caused by the applicant's intentional acts, injuries and damage caused by fault or contributory fault on the part of the applicant, and injuries and damage caused by the consumption of alcohol, narcotic and psychotropic substances by the applicant.*** The minimum coverage is EUR 60 000 per one insured event without any coinsurance or co-payment.

Up-to-date information about insurance is available [HERE](#) (Before Arrival – Insurance).

### MEDICAL AID

With your health insurance, you are entitled to visit any general practitioner or dentist. If you have eye issues or any other problem, you should first visit a general practitioner who will examine you and then, if necessary, arrange for you to see a specialist. Unless it is urgent, we recommend making an appointment in advance on the phone.

Do not forget to bring the **insurance card, an insurance policy number or any other document proving your insurance.**

### Emergency cases

If you urgently need medical attention at a time when doctors' offices are not open, you should use one of the followings emergency services:

- primary treatment of minor conditions  
**First Aid Medical Service (Nemocnice České Budějovice, a.s. - Hospital of České Budějovice)** – Building C, B. Němcové 585/54, České Budějovice  
Phone: +420 387 878 001  
MON-FRI 6:00 pm – 10:00 pm; SAT, SUN, public holidays: 9:00 am – 9:00 pm
- Emergency conditions such as injuries, heart attacks, loss of consciousness, bleeding, etc. are primarily treated in the hospital.  
Hospital emergency service: 3:30 pm – 7:00 am in all departments that provide acute and inpatient care

- Dental emergency

**Zubní pohotovost s.r.o.** – Lidická tř. 439/78, České Budějovice

MON-FRI: 4:00 pm – 10:00 pm; SAT, SUN, public holidays: 8:00 am – 8:00 pm.

Phone: +420 731 559 636

**In case you need assistance, contact your "buddy" from [the ERASMUS STUDENT NETWORK USB](#).**

#### ERASMUS STUDENT NETWORK USB BUDWEIS (ESN USB)

[ESN USB](#) is a team of students from the University of South Bohemia who help international students staying in České Budějovice as part of international mobility programmes such as Erasmus to adapt in our country.



- ESN USB provides buddies for students from abroad, organizes student welcome/farewell parties, excursions to cultural monuments all over the Czech Republic, sports activities etc.
- The aim is to help international students with their arrival to the Czech Republic and to encourage the exchange of knowledge and experience between different cultures.
- Further information about ESC activities is available [here](#).

#### Mentor / Buddy system

- Buddies = university students who are ready to help incoming students to adapt in our town and country. All of them are able to speak English. There are also students who speak German, Spanish, French, Russian, Polish or Italian.
- The main goal is to assist international students during their mobility stay at the University of South Bohemia. Buddies are here for you if you have any questions – if you need help with anything, you can always count on them. They can help you with your arrival to České Budějovice, with accommodation, finding your way around campus and in town, the necessary paperwork, translations... Usually the Buddy will even pick you up at the train or bus station in České Budějovice (sometimes even at the Prague airport) and will show you the way to your faculty and accommodation. So don't worry, we will take care of you and make sure you don't get lost.
- **IT IS HIGHLY RECOMMENDED to apply for a Buddy.** You can do it easily by filling the form [here](#).





## USE OF COMPUTERS/INTERNET



All international students have access to a computer at the University of South Bohemia. The access is enabled via the guest identification card which will be issued to each international student upon his/her arrival to České Budějovice. Students staying in the student residences may use the internet connection available in every room (for a fee).

The University of South Bohemia is part of eduroam, a worldwide roaming access service.

## ACCOMMODATION

### University dormitories

The University of South Bohemia has 5 dormitories in total:

- K1–K4 Dormitories: located on the “Studentská” street
- K5 Dormitory (“URAN”): located on the “J. Boreckého” street

#### K1 – K4 Dormitories

The K1 – K4 Dormitories are situated in the Campus of the University of South Bohemia in “Čtyři Dvory” (part of České Budějovice), on the Studentská street. To get to the Campus by public transport, take the bus line 3, 7, 15, or 53 and get off at the “**Vysokoškolské koleje**” bus stop if you are heading to K1, K2, and Student’s Cafeteria, or at the “**Jihočeská univerzita**” bus stop if you are heading to K3, K4 or Bobík (the university assembly hall – currently undergoing reconstruction).

*Description:* Fully furnished single or double rooms, with a bathroom shared by two rooms. All the rooms are provided with Wifi. A shared kitchen is available on each floor.

**Featuring:** gyms and other sport facilities

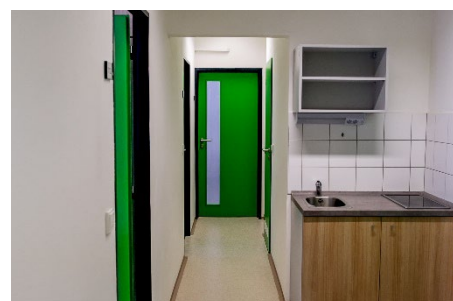
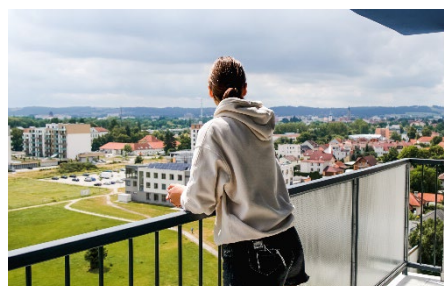
#### K2 and K3 Dormitories

*Description:* Fully furnished double rooms with a refrigerator and a sink. All the rooms are provided with Wifi. Bathrooms are shared; a shared kitchen is available on each floor.

#### K5 Dormitory

To get to the K5 Dormitory situated on the border of the “Vltava” housing estate on the J. Boreckého street, take the public transport lines **1, 5, 8, 9, 15, 18,** or **59** and get off at the “**Evžena Rošického**” or “**Vltava střed**” bus stop.

*Description:* Fully furnished single, double, and triple rooms with a private bathroom. All the rooms are provided with Wifi. A shared kitchen is available on each floor.



## Important links to check:

[How to apply for accommodation in USB Dorms?](#)

[Student Accommodation Code](#)

Apart from the university dormitories, students of the Faculty of Fisheries and Protection of Waters may also use the Faculty's own **housing facilities in Vodňany** (subject to availability).

## USB IDENTIFICATION CARDS

### Short stay (up to one month)

Shortly after arriving to České Budějovice, international exchange students receive a University Identification Card which enables them to access the lectures halls, internet classrooms, student halls etc. situated in the campus. To get the Identification Card you need to pay a CZK 150 deposit.

### Long stay (more than one month)

According to the **Rector's Decision on the APPLICATION AND IMPLEMENTATION OF THE SINGLE IDENTIFICATION AND ACCESS SYSTEM TO JU** which entered into force in 2003, each new student is required to apply for a **Student Identification Card**. It is a chip-free contact card which enables its owner to enter the places protected by the access system and to use the university facilities (printing and copying, canteen, library).

### Standard Card of the University of South Bohemia (for students)

This is a chip card valid only at the University of South Bohemia, issued for a fee of **CZK 80**. To get the card it is necessary to fill in the application form, pay the fee, and provide one passport photograph.



### ISIC – International Student Identification Card

It is a standard student identification card which is also valid outside the university. Issued by the University in cooperation with the GTS ALIVE s.r.o. (International License Provider), the card is valid for a maximum of 16 months. For more information about the use of the card and the possibilities of claiming discounts under the ISIC license, see the [ISIC website](#). A new card is issued for a fee of **CZK 250** (CZK 180 for the licence + CZK 70 for the card and printing). If you already have an ISIC card and only need to renew the licence, the fee is lower.



## DINING

Students' Cafeteria offers breakfast, lunch, and takeaway lunch. Students can choose from several meals every weekday, purchasing them on the spot or ordering them in advance via the electronic ordering system [here](#). International students will be introduced to the system after their arrival.

Students' Cafeteria is opened Mon – Fri, 11 a.m. – 1:30 p.m. The price of meals is usually not higher than CZK 100.

In the evenings and during the weekends, students can either cook their own meals or they can dine in nearby restaurants where the prices range from CZK 150 to CZK 350 for a meal.

## COSTS OF LIVING

Basic costs for food and accommodation are about CZK 10 000 to 12 000 per month.

Accommodation	CZK 3 450 - 6 300
Food	CZK 9 000
<u>Other expenses</u>	<u>CZK 4 500</u>
<b>Basic costs:</b>	<b>CZK 16 950 - 19 800</b>

## ACADEMIC YEAR 2024/2025

### Winter semester:

Classes: 23 Sep – 21 Dec 2024  
 Exam period: 6 Jan – 14 Feb 2025  
 Winter holidays: 22 Dec 2024 – 5 Jan 2025

### Summer semester:

Classes: 17 Feb – 24 May 2025  
 Exam period: 26 May – 27 Jun 2025  
 Summer vacation: 23 Jun – 15 Aug 2025

## GRADING SYSTEM

### Czech grading scale

CZECH Grade	ECTS Grade	% of successful students usually achieving the grade	Definition
1	A	10	EXCELLENT
1-	B	25	VERY GOOD
2	C	30	GOOD
2-	D	25	SATISFACTORY
3	E	10	SUFFICIENT
4	FX	-	FAILED
	F		FAILED

P			PASSED
F			FAILED
HC			HAS NOT COMPLETED the test yet

#### ECTS credits:

1 full academic year = 60 credits

1 semester = 30 credits

#### Faculty grading system:

Basic principles of the credit system at the Faculty of Fisheries and Protection of Waters of the University of South Bohemia:

- Every single course is assigned a certain number of credits which indicate how demanding the course is. Students obtain these credits by meeting all the conditions specified for the given course.
- A standard study load is 30 credits per semester. As a minimum, students need to obtain 20 credits per semester in order to pass to the next semester.
- Students are awarded the credits for their performance in tests (written form) or exams (spoken form). Spoken form of examination is graded according to the Czech grading scale shown above.
- Tests (written form) are often evaluated only as pass/fail (P or F), without using the grading scale. Minimum requirements to pass the tests are stipulated in the conditions specified for the given course.

#### STRUCTURE OF HIGHER EDUCATION IN THE CZECH REPUBLIC

Higher education is provided by university type and non-university type institutions. The non-university higher education institutions mainly offer Bachelor study programmes. Higher education is the highest level of the education system. In 2001, the three-cycle structure was strictly implemented in higher education (i.e. Bachelor's, Master's and Doctoral study programmes). Higher education institutions offer courses in Humanities, Social Sciences, Natural Sciences, Engineering, Medicine and Pharmacy, Theology, Economics, Veterinary Medicine, Agriculture, Teacher Training, and Arts. The majority of higher education institutions are public institutions, financed by the Government budget allocated by the Ministry of Education, Youth and Sports. Private higher education institutions may also be partially financed by the Government. In addition, the Czech higher education system includes 4 Government-run higher education institutions: three military higher education institutions and a Police Academy. These institutions are financed by the Ministry of Defence and the Ministry of the Interior respectively. All higher education institutions provide accredited study programmes which are assessed by the Accreditation Commission. Important partners of the Ministry of Education, Youth and Sports in all decisions concerning higher education are the Czech Rectors' Conference and the Council of Higher Education Institutions. The main language of instruction is Czech – however, the range of programmes delivered in foreign languages (mainly in English) is expanding in order to cater to international students.

#### University level studies:

University level first stage: Bachelor studies (Bc. = "Bakalář"):

Bachelor study programmes are 3 to 4 years in duration (180–240 ECTS credits), covering all main disciplines except Medicine, Veterinary Medicine, Pharmacy, Architecture, and Law. They are designed either as an independent course whose graduates are fully qualified for particular professions, or as



the first stage of longer studies whose graduates can continue towards a Master's degree. Bachelor studies lead to the academic degree of "Bakalář" (Bc.), or "Bakalář umění" (BcA.) in the field of Arts which was introduced in January 1999. Students must sit for a final state examination, part of which is also the defence of the Bachelor thesis. Successful graduates may enter the labour market or continue their studies in postgraduate Master's programmes in related fields.

University level second stage: Master studies (Mgr. = "Magistr"):

Master study programmes may either follow on from bachelor programmes as postgraduate Master's programmes (2 to 3 years; 60–180 ECTS credits), or they may be standalone programmes (4 to 6 years; 240–360 ECTS credits). Programmes focus on the acquisition and application of theoretical knowledge, and on the development of creativity and talent. Graduates in Master's programmes have to take a final state examination and publicly present and defend a thesis.

Studies in Master's programmes result in the following degrees:

- magistr (Mgr.): Master of Humanities, Sciences, Law, Education, Pharmacy and Theology
- magistr umění (MgA.): Master of Arts
- inženýr (Ing.): Engineer in the field of Economics, Technical Sciences and Engineering, Agriculture, Forestry and Military branches of study
- inženýr architekt (Ing. arch.) – Engineer in the field of Architecture
- doktor medicíny (MUDr.): Doctor of Human Medicine
- zubní lékař (MDDr.): Doctor of Dental Medicine
- doktor veterinární medicíny (MVDr.): Doctor of Veterinary Medicine

Holders of a "magistr" Master's degree may sit a demanding state examination in the same field, and present and defend a rigorous thesis. Upon successful completion, the following academic degrees are awarded:

- doktor práv (JUDr.): Doctor in the field of Law
- doktor filozofie (PhDr.): Doctor in the field of Humanities, Teacher Training and Social Sciences
- doktor přírodních věd (RNDr.): Doctor in the field of Natural Sciences
- doktor farmacie (PharmDr.): Doctor in the field of Pharmacy
- licenciát teologie (ThLic.): in the field of Catholic Theology
- doktor teologie (ThDr.): Doctor in the field of Theology, excluding Catholic Theology

University level third stage: Doctoral studies: (Dr. = "Doktor"):

The third and highest level of higher education consists in studies for the Doctorate which take place under the guidance of a tutor. The programme is aimed at scientific research and independent study. Only holders of the Master's Degree may apply. Studies last for three years (four to five years if part-time) and lead to the academic degree of Doktor (PhD), or "Doktor Teologie" (Th.D.) in the field of Theology. Studies end with the State Doctorate examination and the public presentation and defence of a dissertation based on original work, which must be published.

Graduates of Doctoral study programmes are awarded the academic degree of:

- doktor (Ph.D.)
- doktor teologie (Th.D.) in the field of Theology

At some higher education institutions and institutes of the Academy of Sciences, studies leading to the award of the "Kandidát věd" (Candidate of Science, abbreviated as "CSc") still exist. Participants in these programmes may complete their education and finish the defence of their dissertation by 31 December 2001. The degree "Doktor věd" (Doctor of Science as "DrSc") is the highest scientific degree. It is awarded on the basis of original research work and the public defence of the Doctorate thesis.

## USEFUL AND INTERESTING WEB-PAGES

### General Information

[The Czech Republic](#)

[Discover Czech Itinerary Planner](#)

[The town of České Budějovice](#)

### Information about the University

[University of South Bohemia](#)

[Faculty of Fisheries and Protection of Waters](#)

[University Dormitories and Canteens](#)

### Transport

[Prague Airport](#)

[Prague Tube](#)

[Public transport in Prague](#)

[Public transport in České Budějovice](#)

[Nationwide public transport journey planner](#)

## FREE TIME

### Swimming Pool

Gym, 50-metre swimming pool, diving pool, water slide, sun beds, steam bath, Jacuzzi, swimming lessons.

Address: Sokolský ostrov 4, 370 01 České Budějovice  
phone: +420 386 107 141

#### Opening hours:

Monday:	10:00 a.m. - 9:45 p.m.
Tuesday – Friday:	7:00 a.m. – 9:45 p.m.
Saturday:	10:00 a.m. – 8:45 p.m.
Sunday and bank holidays:	10:00 a.m. – 7:45 p.m.



### Fitness “Pouzar” Gym

Address: Dlouhá 35,  
370 11 České Budějovice  
  
phone: +420 774 95 34 34



### Ice Hockey stadium

Address: F.A.Gerstnera 8/7,  
370 01 České Budějovice  
  
phone: +420 386 107 111

